



Expert Group Meeting for the Global Sustainable Development Report

Tourism sustainability

Jelena Knežević, Adviser to the Minister
Ministry for Sustainable Development and Tourism of Montenegro
Dubrovnik, 21 October 2013

UNWTO

- **The 12 aims of sustainability in tourism have been defined by the UNWTO** as: economic viability, local prosperity, employment quality, social equity, visitor fulfillment, local control, community wellbeing, cultural richness, physical integrity, biological diversity, resource efficiency, and environmental purity.
- **Global Sustainable Tourism Council (GSTC)**, hosted by UNWTO, has developed the **Global Sustainable Tourism Criteria** which consist of 40 criteria for hotels and tour operators, as well for destinations, divided into four main areas: sustainable management, and socioeconomic, cultural, and environmental impacts.
- **Global Partnership for Sustainable Tourism (GPST), 2011:** UNWTO, UNEP, UNESCO, UNCTAD, UNDESA, UNDP, UNIDO, as well as national governments, nongovernmental organization, and businesses. The goal: to make sustainability principles part of the mainstream of tourism policies, development, and operations.

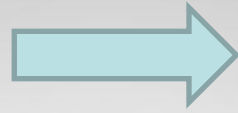
The Future We Want- Rio+20 (2012) –

V. Framework for action and follow-up –

A. Thematic areas and cross-sectoral issues- Sustainable tourism

- **principle outcomes:** emphasis on sustainable tourism's importance for creating decent jobs and generating trade opportunities;
- **recognized needs :**
 - ❑ **to support sustainable tourism activities and relevant capacity building** that promote environmental awareness, conserve and protect the environment, respect wildlife, flora, biodiversity and ecosystems and cultural diversity, and improve the welfare and livelihoods of local communities, particularly in developing countries.
 - ❑ **to encourage investment in sustainable tourism**, including eco-tourism and cultural tourism, which may include creating small- and medium-sized enterprises and facilitating access to finance, including through microcredit initiatives for the poor, indigenous peoples and local communities in areas with high eco-tourism potential

MDG



SDG

- **Millennium Development Goals (MDGs) (2000):** sustainable tourism has had demonstrable direct impacts on goals : 1(poverty), 3 (gender), 7 (environment), and 8 (partnerships).
 - e.g. tourism policy framework for Central America emphasizes reduction of the poverty through tourism, promoting small and micro businesses, ensuring environmental sustainability.
- **General Assembly Open Working Group on SDGs, 2013 2014.**

Mediterranean region

- World Bank's report, Inclusive Green Growth: The Pathway to Sustainable Development (2012)
- 2012 MED Report Toward Green Growth in Mediterranean Countries with the aim to:
 - mainstreaming the environment in the development agenda,
 - green growth;
- UNEP/MAP:MSSD/Blue Plan: Towards an observatory and a „quality label,, of tourism sustainability in the Mediterranean;

The pressures from tourism settlements

- Water consumption
- Wastewater production
- Waste production
- Noise
- Energy Consumption
- Urban sprawl (loss of natural ecosystems, soil degradation and biodiversity reduction, landscape derogation)
- Urban quality of life
- Beach erosion
- Sea water quality (Loss of marine biodiversity)

The impact of tourism on landscapes, biodiversity, quality of the urban environment and natural resource quality (mainly beaches) depends on the development model and the extent to which rules and restrictions have been applied.

Tourism and economy and society

- Tourism and economy: the GDP generated by tourism, tourism sustainability-destination sustainability (destination management), tour operators
- Investment in tourism:
 - impacts to quality of life
 - destination management models
 - impacts to urbanization (hotel capacities, residential capacities, mixed use resorts)
- Tourism and employment

Responses

- Sustainable destination management
 - Controlled urbanization (conservation by concentration; “smart“ urban development)
 - Green growth-green jobs
 - ICZM tools
 - Rural development and tourism sustainability and diversification
 - Landscape development and tourism diversification
-
- **Integration into GSDR that would tend to contribute to greening the national tourism policies and to the improvement of the national sustainable development policies;**
 - **Priorities identified by the GSDR should serve as the platform for creating the partnerships (policy decision makers-governments, civil/NGO sector, scientist, business sector), with the special attention to the capacity building programmes.**

Priority Actions

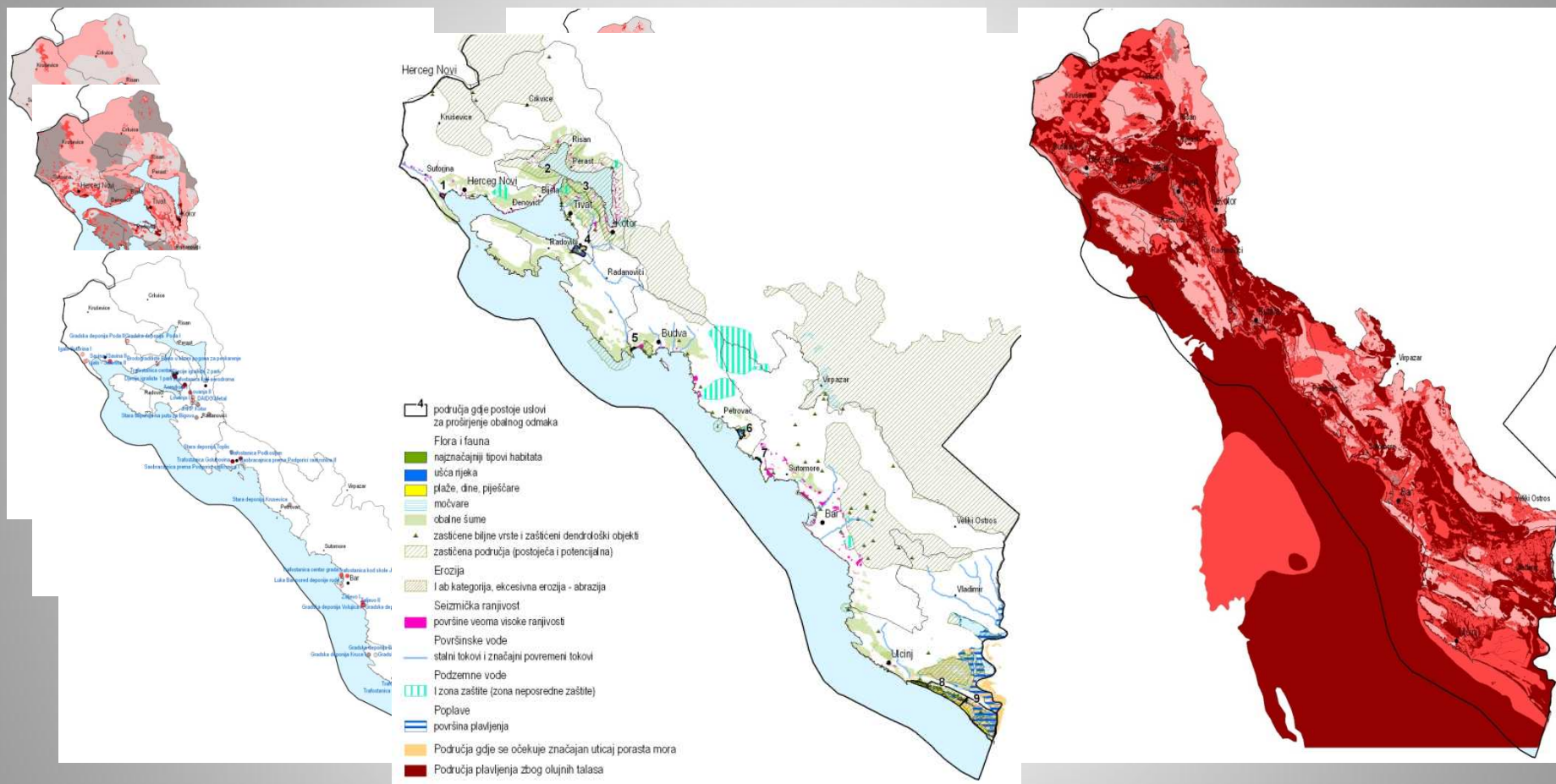
- Maximizing the productivity of natural assets while dealing with trade-offs
- Managing coastal areas to maximize ecosystem services and sustainable tourism
- Moving towards sustainable urbanization:
 - Integrated Coastal Zone Management (ICZM) introduce set of instruments for ensuring that coastal resources are used in a sustainable manner. ICZM relies on a number of measures to achieve its goals, including institutional coordination; physical limits on coastal development; integration of environmental concerns into the regulation of agriculture, fisheries, tourism, mining, energy production, and infrastructure development in coastal zones; creation of protected areas where appropriate; wider public participation in the ICZM process; and awareness raising, training, and research

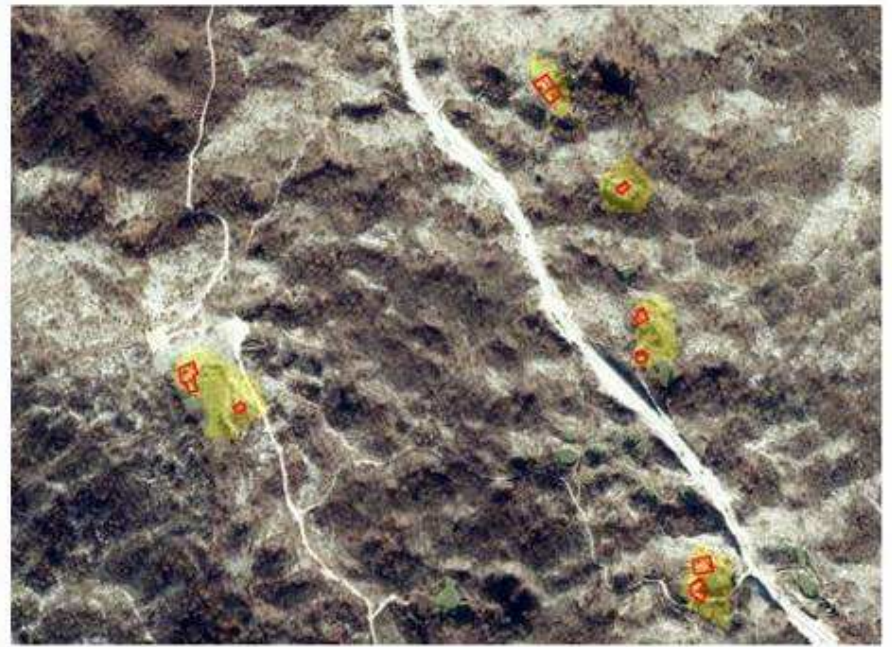
Controlled urbanization

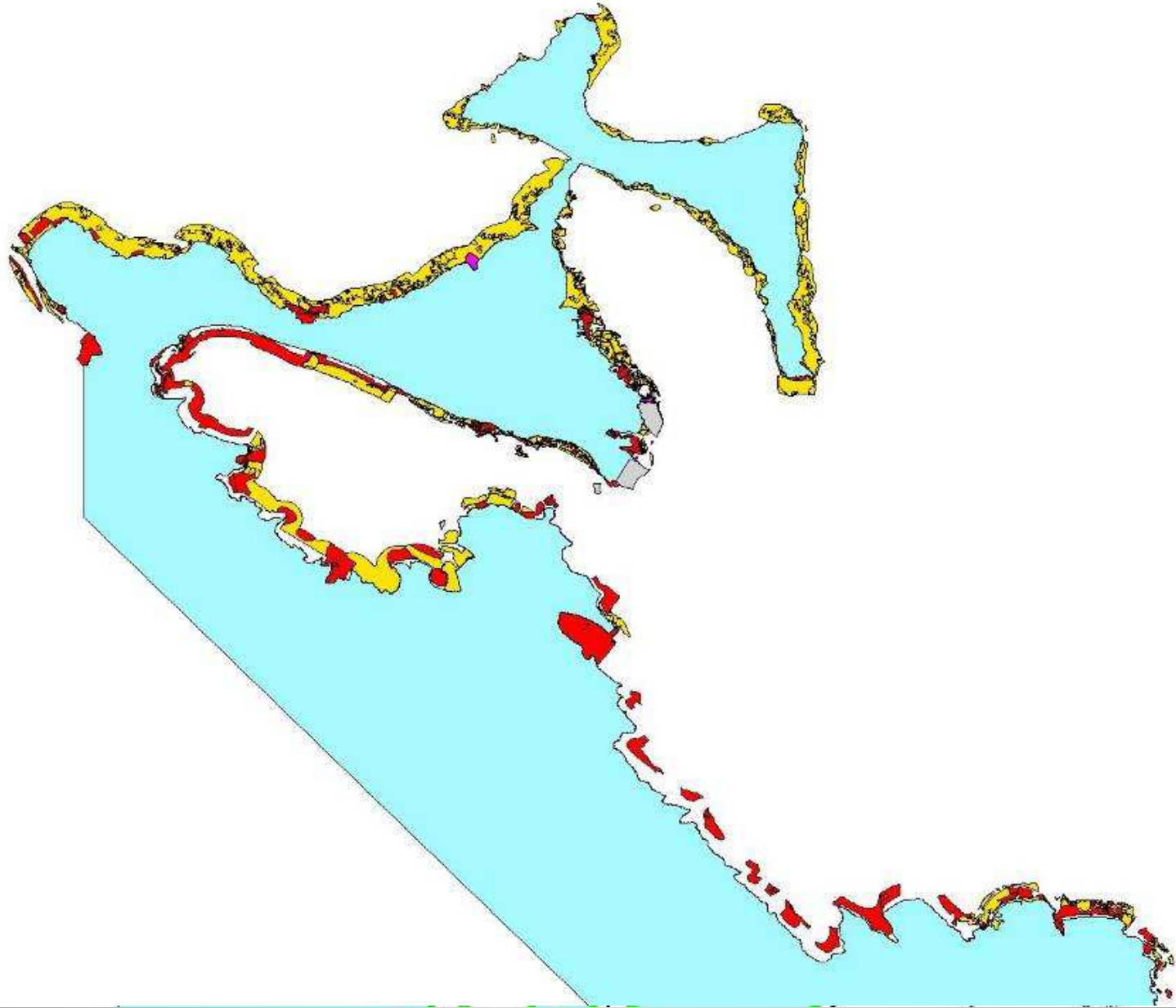
PRIORITY ACTIONS PROGRAMME



MINISTRY FOR SUSTAINABLE
DEVELOPMENT AND TOURISM OF
MONTENEGRO







Set back:

France –100m from 1979

Spain – 100m from 1988

Israel–100m from 1983

Italy – 300m, Sardinja from 2010 -2km

Croatia- 100m from 2004

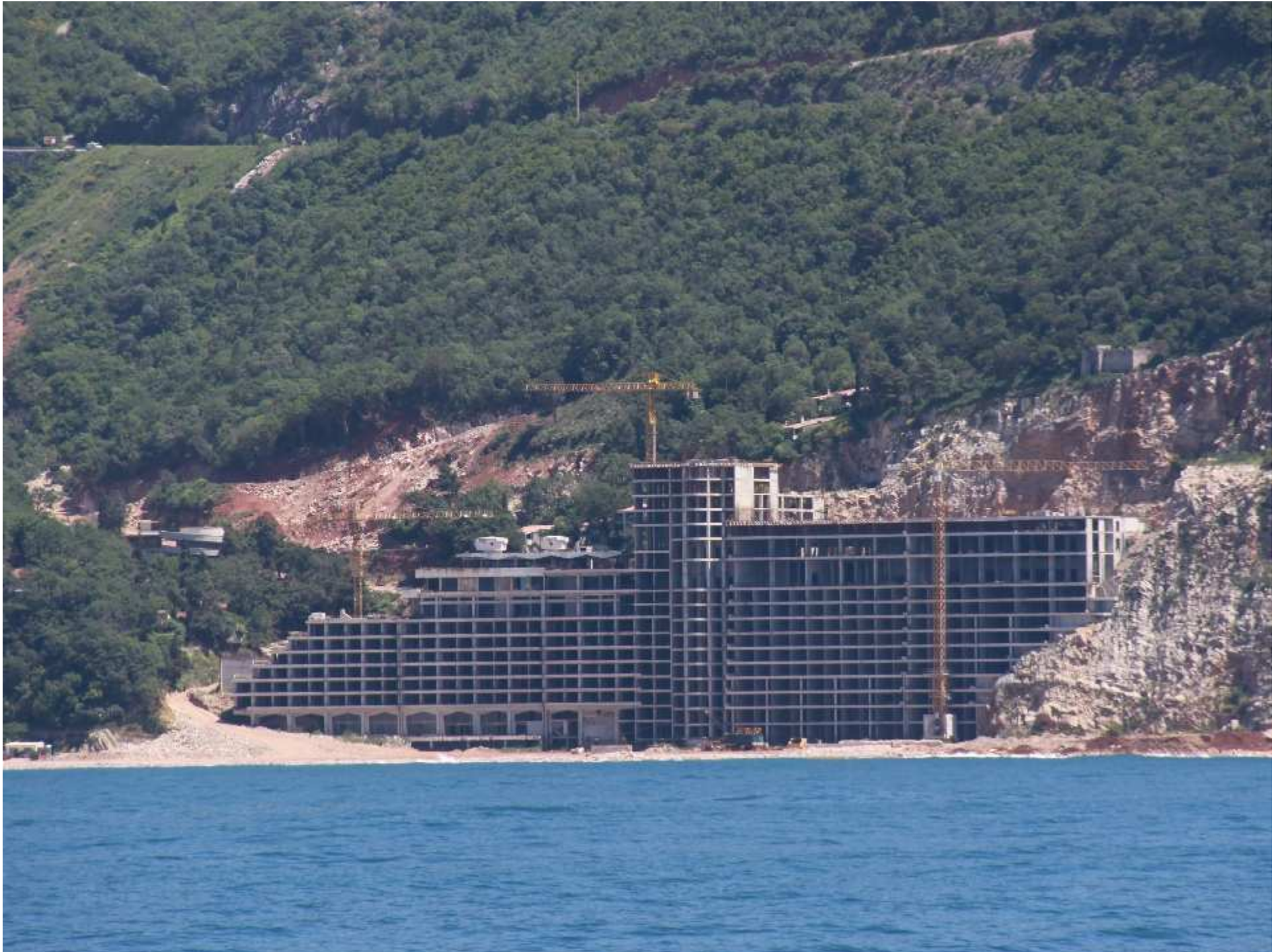
Montenegro –creates the coastal set back zone

▪

		prirodni kriteriji					
namjena površina	stanje izgrađenosti	R0	niža	R1	viša	R3	najviša
		ranjivost		umjerena ranjivost	ranjivost	ranjivost	ranjivost
antropogeni kriteriji	1. GP naselja	1. izgrađeno	1 odmak se ne može primijeniti				
		2. dijelom izgrađeno	2 adaptacija naslijeđena prava				
			3 adaptacija, urbanistički kriteriji	3 adaptacija, urbanistički kriteriji	4 adaptacija, urbanistički kriteriji uz dodatne mjere	4 adaptacija, urbanistički kriteriji uz dodatne mjere	
		3. neizgrađeni dijelovi	2 adaptacija naslijeđena prava				
	3 adaptacija, urbanistički kriteriji		3 adaptacija, urbanistički kriteriji	6 adaptacija projekti javnog interesa uz dodatne mjere	6 adaptacija projekti javnog interesa uz dodatne mjere		
	2. GP izvan naselja	1. izgrađeno	1 odmak se ne može primijeniti				
		2. dijelom izgrađeno	2 adaptacija naslijeđena prava				
			3 adaptacija, urbanistički kriteriji	3 adaptacija, urbanistički kriteriji	6 adaptacija projekti javnog interesa uz dodatne mjere	6 adaptacija projekti javnog interesa uz dodatne mjere	
		3. neizgrađeno	2 adaptacija naslijeđena prava				
	5 adaptacija projekti javnog interesa		9 bez adaptacije	9 bez adaptacije	9 bez adaptacije		
	3. obala izvan GP planirana kao prirodna obala	1. izgrađeno	1a odmak se ne može primijeniti, prioritet legalizacija i sanacija	1b odmak se ne može primijeniti, prioritet legalizacija i sanacija, dodatne mjere			
		2. dijelom izgrađeno	7 adaptacija, prioritet legalizacija i sanacija	8 adaptacija isključivo u funkciji legalizacije i sanacije, dodatne mjere			
3. neizgrađeno		5 adaptacija projekti javnog interesa	9 bez adaptacije	9 bez adaptacije	9 bez adaptacije		











PALMA
ES CAPDELLA



SECTORAL CHARACTERISATION

SOCIO-ECONOMIC

TOURISM DEVELOPMENT
(hotels, residential tourism,
mixed use resort); TCCA;

**AGRICULTURE –
ATTRACTIVENESS**

DEMOGRAPHIC POTENTIAL

**National
Strategy
ICZM**



**ICZM
Plan**



**Action
PLAN**

**Content and models
for development of
open spaces**
(e.g. Projects on agriculture
development, recreational and
leisure activities, brownfields
sanation)

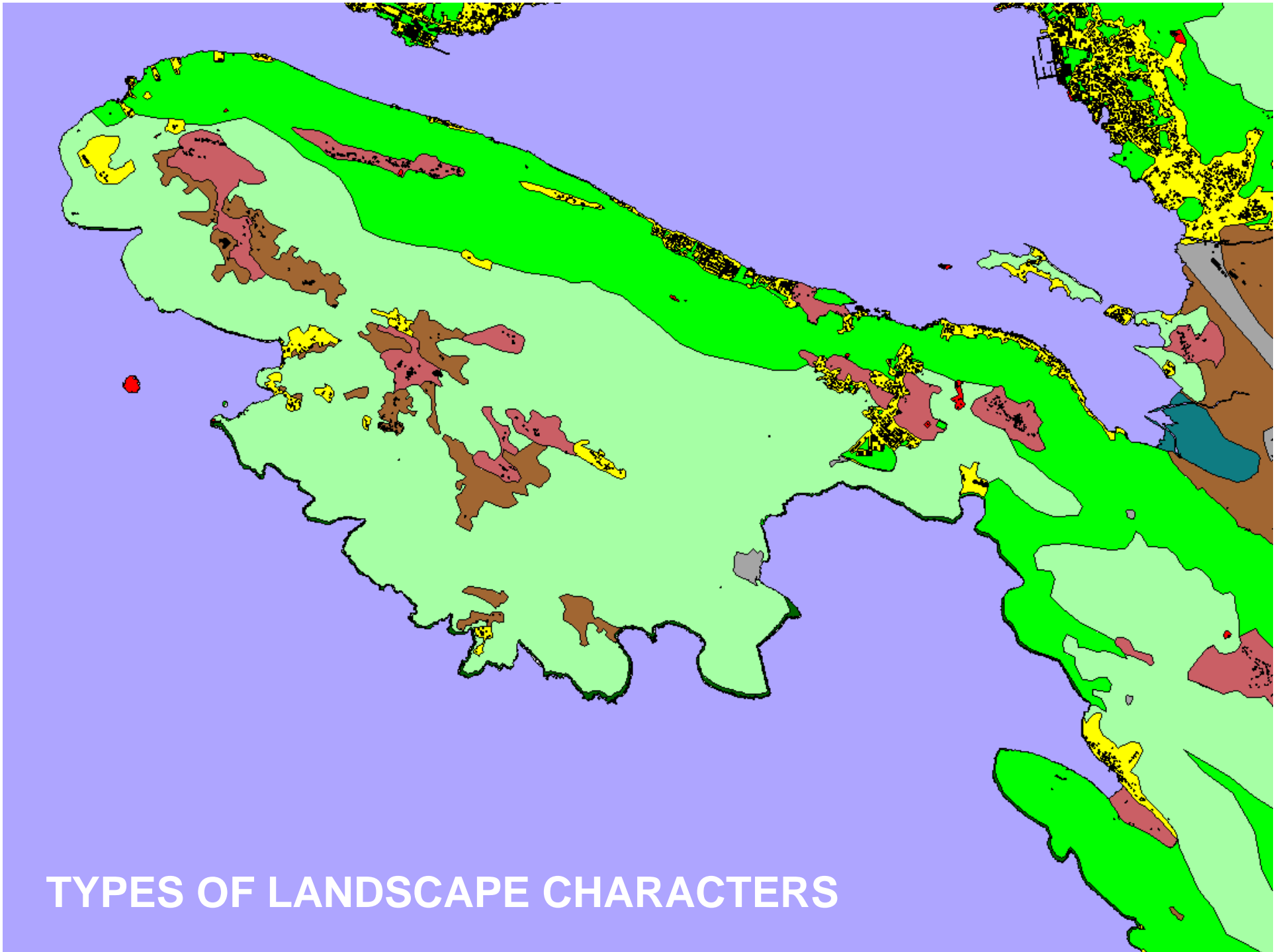
**OPEN SPACE
CONCEPT
(Article 8.3 ICZM Protocol)
Coupling results
of relevance for rural development and
Development and protections of
Coastal landscapes**



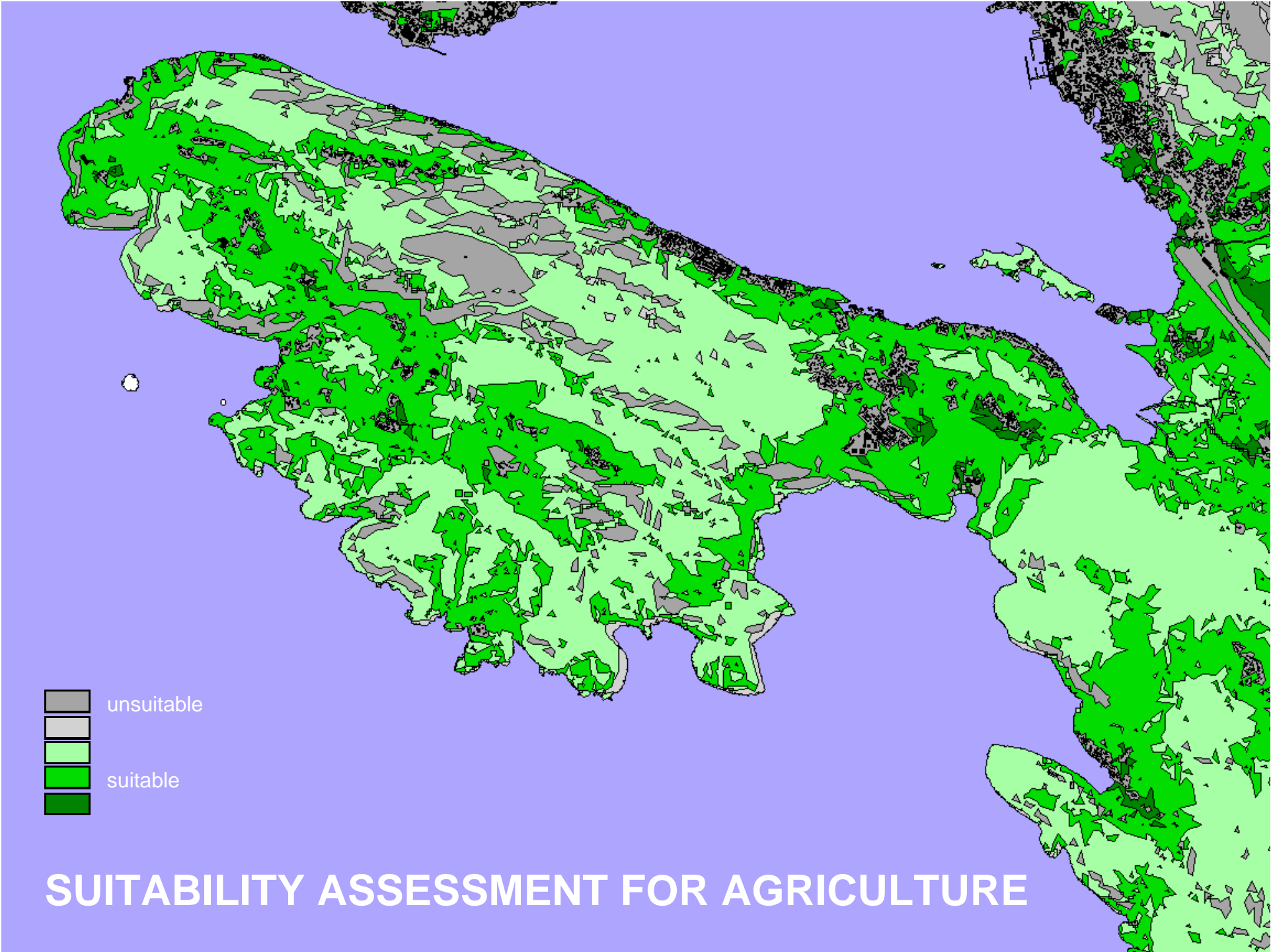
PPPNOPCG

Open Areas: Rural development and Landscape developemnt

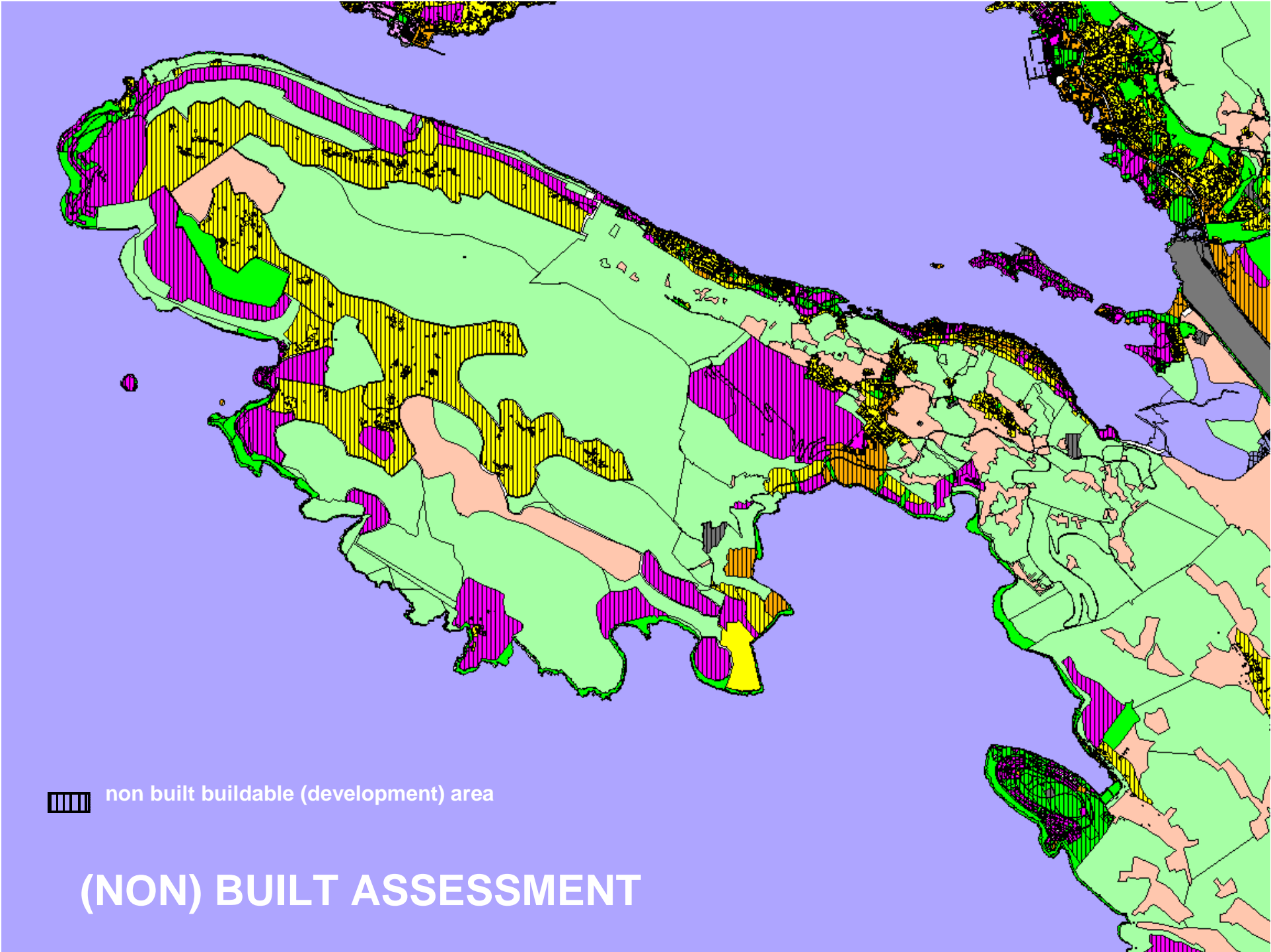
- SCP/green entrepreneurship
- Eco /nature-based tourism
- Organic/traditional/non-intensive agriculture



TYPES OF LANDSCAPE CHARACTERS

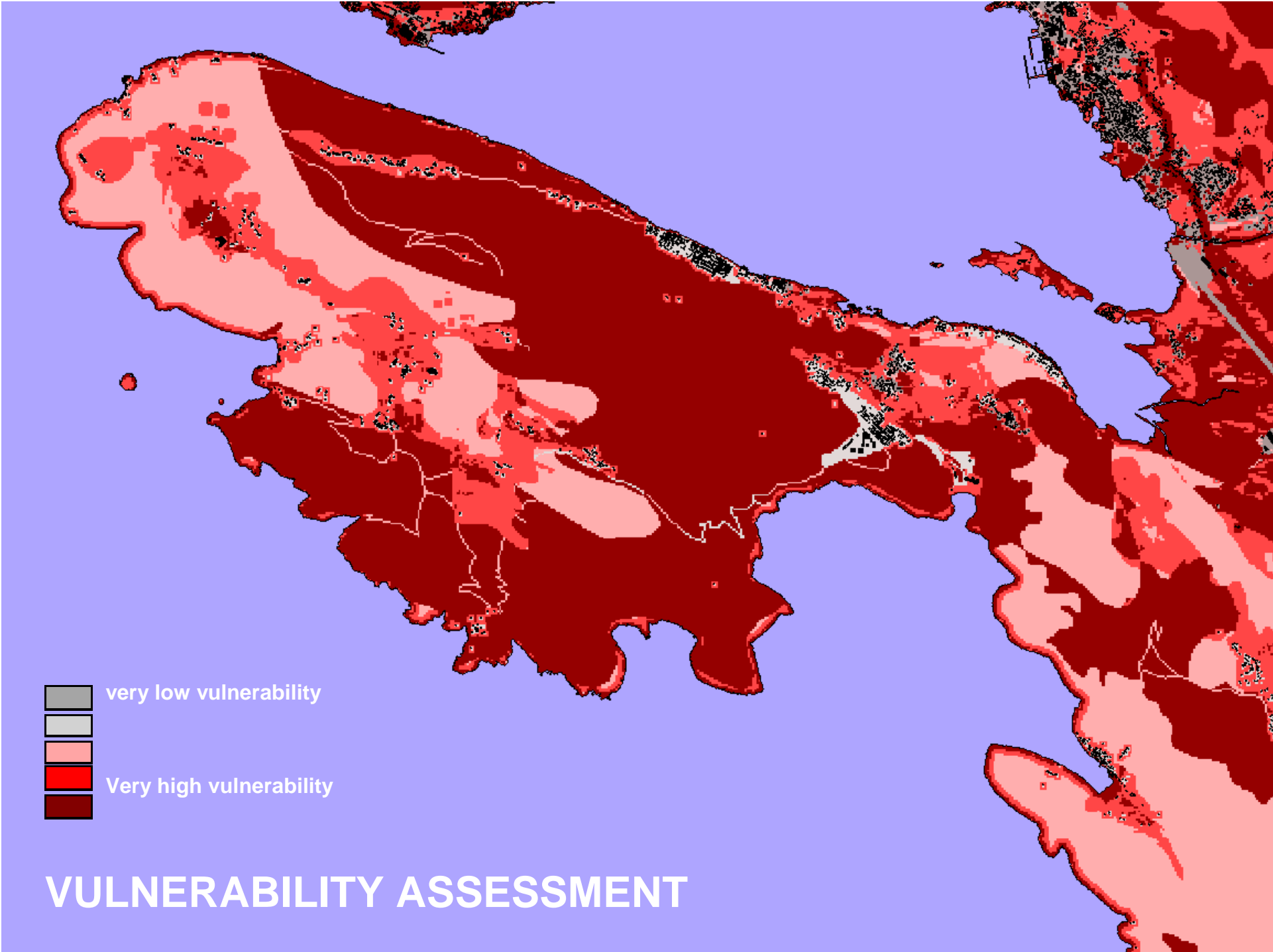


SUITABILITY ASSESSMENT FOR AGRICULTURE



non built buildable (development) area

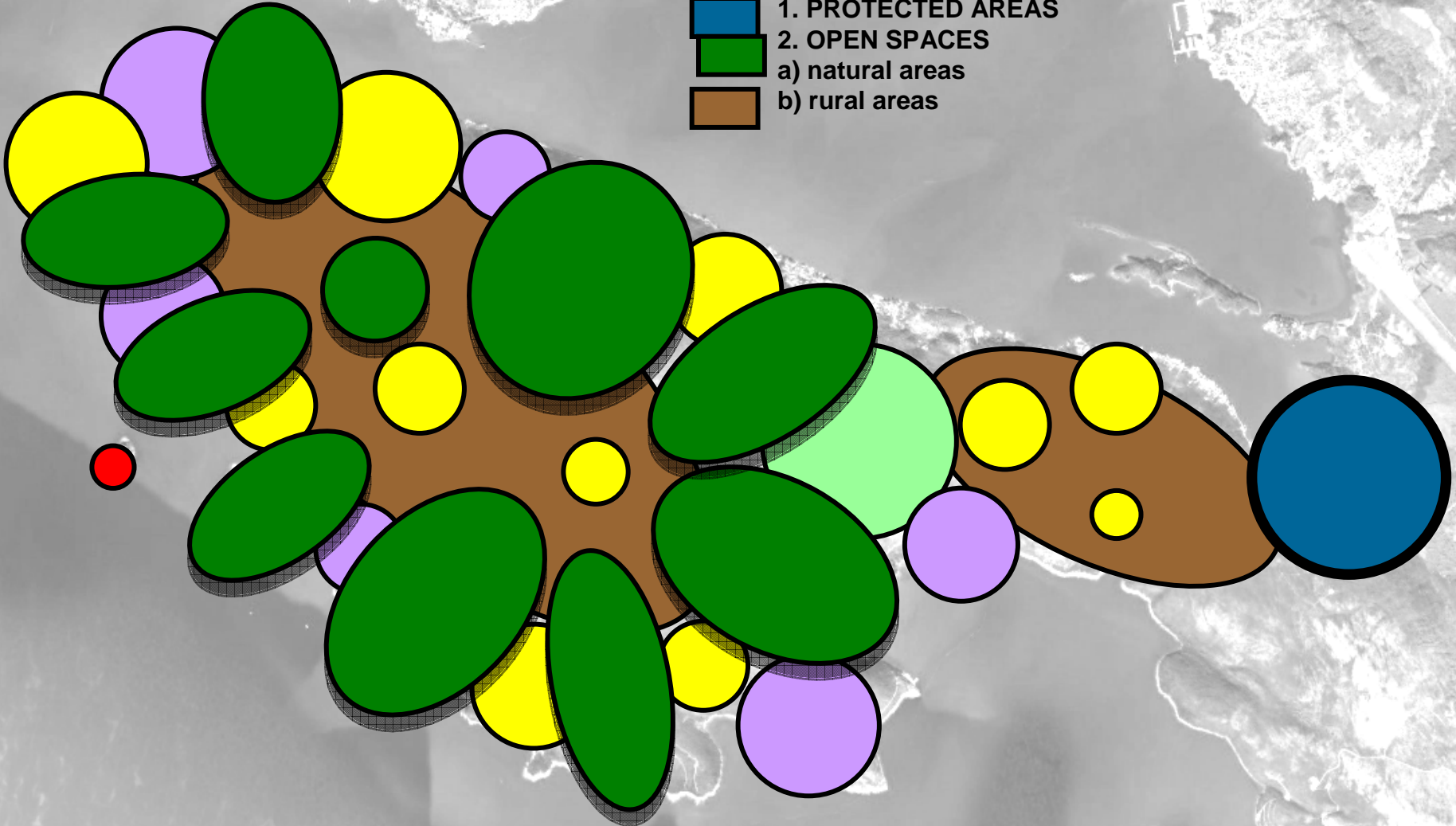
(NON) BUILT ASSESSMENT



- very low vulnerability
- low vulnerability
- medium vulnerability
- high vulnerability
- Very high vulnerability

VULNERABILITY ASSESSMENT

- 1. PROTECTED AREAS
- 2. OPEN SPACES
 - a) natural areas
 - b) rural areas



OPEN SPACE CONCEPT

- 3. SETTLEMENTS
- 4. OTHER AREAS =
 - a) buildable (development) areas out of settlements + b) open areas

















**MINISTRY FOR
SUSTAINABLE
DEVELOPMENT AND
TOURISM OF
MONTENEGRO**





**MINISTRY FOR SUSTAINABLE
DEVELOPMENT AND TOURISM OF
MONTENEGRO**

